

Homily for the Assumption of Blessed Virgin Mary
August 15, 2023
*Rev 11, 19; 12, 1-6. 10; Psalm 44, 10bc. 11. 12ab. 16;
1 Cor 15, 20-27; Lk 1, 39-56*
Most Reverend Joseph J. Tyson, Bishop of Yakima

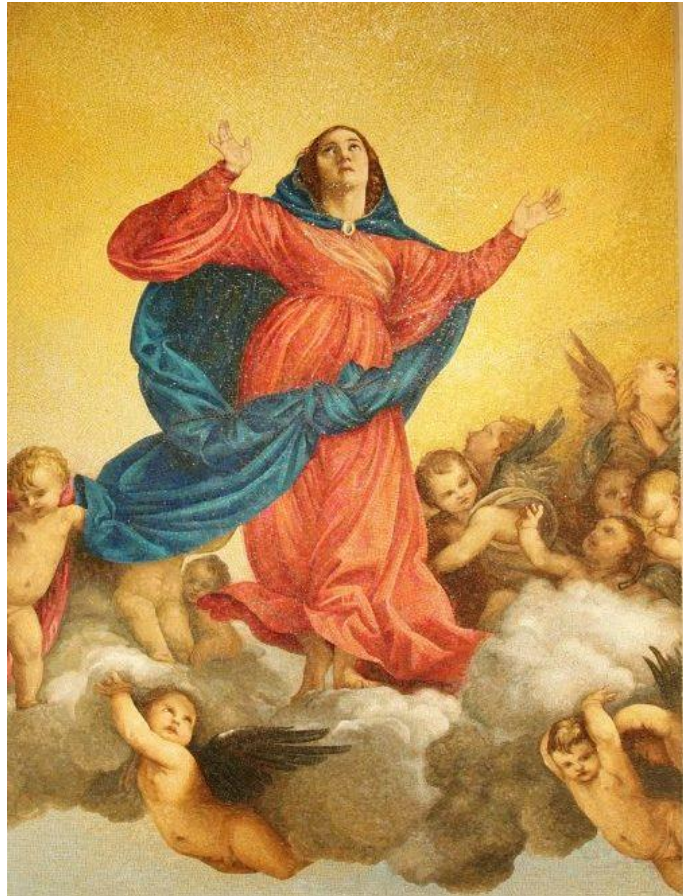
Peace be with you!

How might we understand this
Feast of the Assumption?

Doctrinally, we understand this
feast to commemorate the
assumption of the Blessed Virgin
Mary – body and soul – into
heaven.

Pastorally, we understand her
assumption as marking a pathway
for us too. Where she leads, we
hope to follow.

On this pastoral level, I am always
struck by how many people visit
Marian shrines. Indeed, the shrine
of Our Lady of Guadalupe is the
most visited religious shrine in the
world! More than Mecca in Saudi
Arabia. More than any Buddhist
temple in Asia! More than even
St. Peter's in Rome. More people
visit the shrine of Our Lady of Guadalupe than any other religious site in the world.



“A great sign appeared in the sky. A woman clothed with the sun with the moon at her feet and a crown to twelve stars. She was with child and wailed aloud as she prepared to give birth”. Who among us hearing these words from the Book of Revelation cannot help but see the image of our Lady of Guadalupe!

And when you add in the other Marian shrines such as our Lady of Fatima in Portugal or our Lady of Lourdes in France or Our Lady of Altötting in Germany or Our Lady of La Vong in Vietnam; then suddenly you can realize just how key Mary is to our human religious experience.

Mary's bodily assumption into heaven is key because Mary points the way. Just as the mysteries of the rosary point us to various aspects that Mary sees in the life of Jesus so,

too, is Mary an orientation point giving us directionality in our own desire to follow Jesus.

In gazing on her we can ask ourselves about the direction of our life. Where are we headed? How is our pilgrimage with Jesus Christ? What's our desire? What's our hope? In a passing world for what or for whom do we long?

May our devotion to the Assumption of the Blessed Virgin Mary deepen our daily walk – our pilgrimage – with Christ. And may any pilgrimage we make to any Marian shrine help us to see Christ through the eyes of his Mother. Peace be with you!

Art: Assumption Mosaic based on work of artist Titian, Basilica of the National Shrine of the Immaculate Conception, Washington, D.C.